A stylized tree graphic composed of several overlapping, curved, semi-transparent bands in shades of red and pink, set against a solid dark red background. The bands curve from the top left towards the bottom right, creating a sense of movement and depth.

Birchwood Sixth Form Information Booklet

your dreams, your future, our challenge

Welcome to Birchwood

It is a real privilege to welcome you to Birchwood High School's Sixth Form Open Evening. Even in my short time here I can honestly say that Birchwood's Sixth Form truly is the jewel in our crown. Year 12 and 13 sees the culmination of all the hard work that the students have put in from Year 7 and we see the blossoming of inquisitive, curious, and focused young people. We develop new leaders prepared to take on the next step, whether that be to University, Apprenticeships, or into the world of work. We firmly believe that with our tried and tested triangle of support, we are able to nurture both our internal and external students in a way that means they can be challenged and supported, allowed to explore new and deep ideas and experience a wider world that enables them to be successful, confident and responsible citizens.

In essence as a student of Birchwood you will:

- Experience great teaching, in first class facilities
- Kick-start your career thinking with dedicated careers support and fantastic work experience opportunities
- Be supported by subject teachers, personal tutors and have bespoke careers advice
- Be given amazing enrichment opportunities
- Be encouraged to lead and to contribute, ensuring that you leave us as a successful adult ready to take on the world.

We hope you have a wonderful evening and very much hope to see you in September 2024!

Mr Sam Griffin
Principal

Welcome to the Birchwood Sixth Form Open Evening. I am Madeleine Gilbank, the Principal Student. For many of you this will seem like the decision that will determine the entirety of your future (I know that is how it felt for me) and while it is the start of many big decisions to come, Birchwood will guide you through the next two years.

The Sixth Form Leadership Team, complimented by our in-house careers adviser are all on hand to guide you through all your post 16 and 18 options, as well as support for you when you are here. It is so comforting to know that a door is always open to you for whatever you need. This support is extended through to your subject teachers, all experts in their subjects, whose enthusiasm and love for teaching knows no bounds.

Birchwood holds many values: ensuring support towards academic success is always available; encouraging enrichment and recognising the importance of opportunities; listening to the student voice; championing inclusion and diversity. Please take time this evening to speak to subject teachers, come along to the Principal's Talk, and most importantly speak to our outstanding sixth form students – nobody can give you a better view of life as a sixth form student. I hope you enjoy your evening.

Madeleine Gilbank
Principal Student



Plan your evening

Open from 17:30

Subject Fayre ongoing throughout the evening

Subject Seminars 17:35 – 17:55

Welcome Talk 18:00 – 18:30

Subject Seminars 18:35 – 18:55

Welcome Talk 19:00 – 19:30

Subject Seminars 19:35 – 19:55

Subject Seminars 20:00 – 20:20

Evening Close 20:30

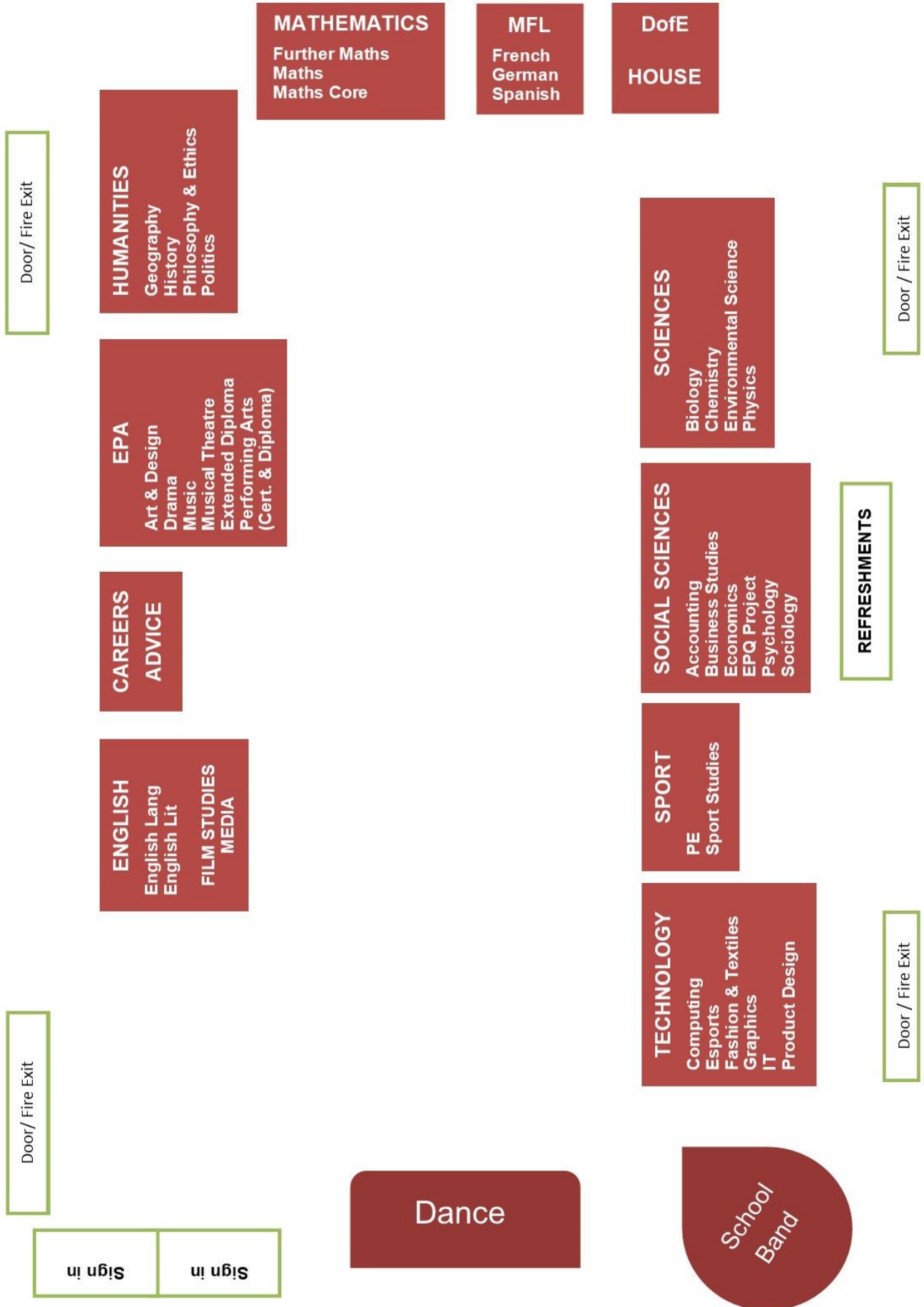
Evening Organiser

Time	Welcome Talk	Subject Seminars	Subject Fayre
17:35-17:55			
18:00-18:30			
18:35-18:55			
19:00-19:30			
19:35-19:55			
20:00-20:20			

Key Dates

Closing date for applications	Wednesday 20 December 2023
URL link to applications – goes live 17 November 2023	https://birchwoodonline.applicaa.com/year12
Guidance Meetings	January 2024
Offer Letters	February 2024

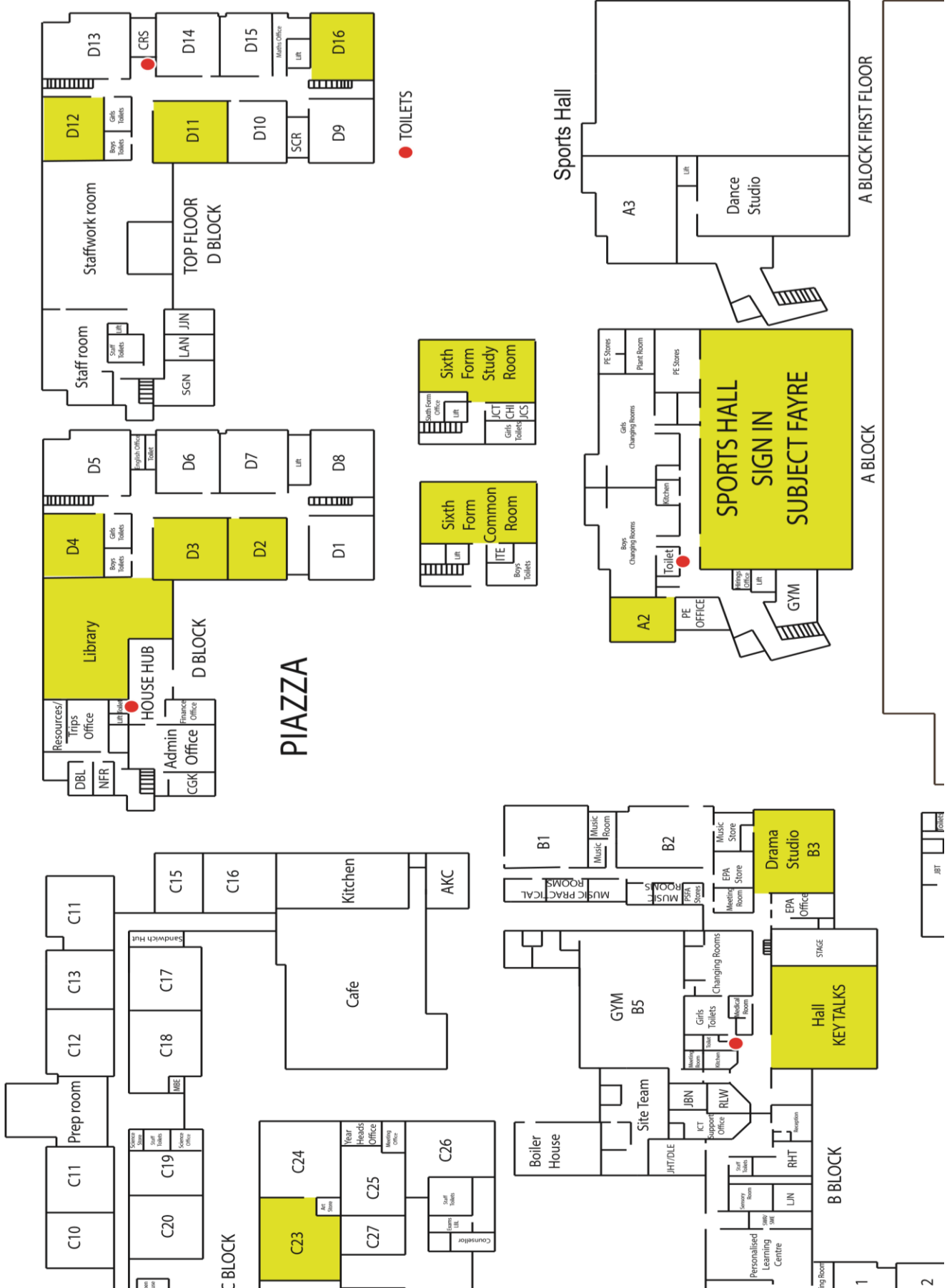
Subject Fayre – Sports Hall



Subject Seminars/Location

Careers – Sports Hall	Mathematics – D12	Social Sciences – D11
English/Film/Media – D2	<ul style="list-style-type: none"> • Further Maths 	<ul style="list-style-type: none"> • Accounting
<ul style="list-style-type: none"> • English Language 	<ul style="list-style-type: none"> • Maths 	<ul style="list-style-type: none"> • Business Studies
<ul style="list-style-type: none"> • English Literature 	<ul style="list-style-type: none"> • Mathematics Core 	<ul style="list-style-type: none"> • Economics
<ul style="list-style-type: none"> • Film Studies 	MFL – D3	<ul style="list-style-type: none"> • EPQ Project
<ul style="list-style-type: none"> • Media Studies 	<ul style="list-style-type: none"> • French 	<ul style="list-style-type: none"> • Politics
Art & Design – C23	<ul style="list-style-type: none"> • German 	<ul style="list-style-type: none"> • Psychology
<ul style="list-style-type: none"> • Art & Design (Fine Art) 	<ul style="list-style-type: none"> • Spanish 	<ul style="list-style-type: none"> • Sociology
<ul style="list-style-type: none"> • Art & Design (Textiles Design) 	Sciences – Library	Sport - A2 Sports Hall
EPA - B3 Drama Studio	<ul style="list-style-type: none"> • Biology 	<ul style="list-style-type: none"> • Physical Education
<ul style="list-style-type: none"> • Drama 	<ul style="list-style-type: none"> • Chemistry 	<ul style="list-style-type: none"> • Sports Studies
<ul style="list-style-type: none"> • Music 	<ul style="list-style-type: none"> • Environmental Science 	Technology – D4
<ul style="list-style-type: none"> • Musical Theatre 	<ul style="list-style-type: none"> • Physics 	<ul style="list-style-type: none"> • Computer Science
<ul style="list-style-type: none"> • Performing Arts 		<ul style="list-style-type: none"> • Esports
Humanities – D16		<ul style="list-style-type: none"> • Fashion & Textiles
<ul style="list-style-type: none"> • Geography 		<ul style="list-style-type: none"> • IT
<ul style="list-style-type: none"> • History 		<ul style="list-style-type: none"> • Product Design
<ul style="list-style-type: none"> • Religious Studies 		

Site Map



Enrichment and Wider Curriculum

Careers

Birchwood High School is committed to meeting the national Quality in Careers Standard and is currently working towards accreditation for the delivery of a high quality, impartial careers programme to all our students.



At Birchwood Sixth Form we are committed to preparing our students for their future beyond the school environment. We offer a planned programme of Career and Work Related Education built around the Unifrog online platform which encourages students to explore all of their post 18 options. Our Careers Program is reviewed annually.

Students have access to one-to-one guidance and support through Mrs Crimes who is a fully qualified Careers Adviser based in the Sixth Form.

Mrs J Crimes
Careers Leader

Trips

Sixth form trips and visits are many and varied and enrich the student experience at Birchwood.

There are a number of curriculum trips including Geography fieldwork visits, external workshops for Politics, Business and Economics. Many Drama and Dance visits to see live performances which broaden students' knowledge and give them material to use when answering exam questions. MFL also organise visits designed to encourage the use of the students chosen spoken language and offer experience of the culture of those countries, which include film festival visits in the chosen language.

There is an annual trip organised to encourage team building and over recent years this has been a ski trip to New York or this year a ski trip to Italy. Students have also had an opportunity to attend the Language Christmas Market trip.

We also ensure we offer students an opportunity to attend the UCAS Discovery Exhibition, which offers lots of relevant information about the way forward after Sixth Form.

Mrs J Dixon
Trips Co-ordinator

Tutors

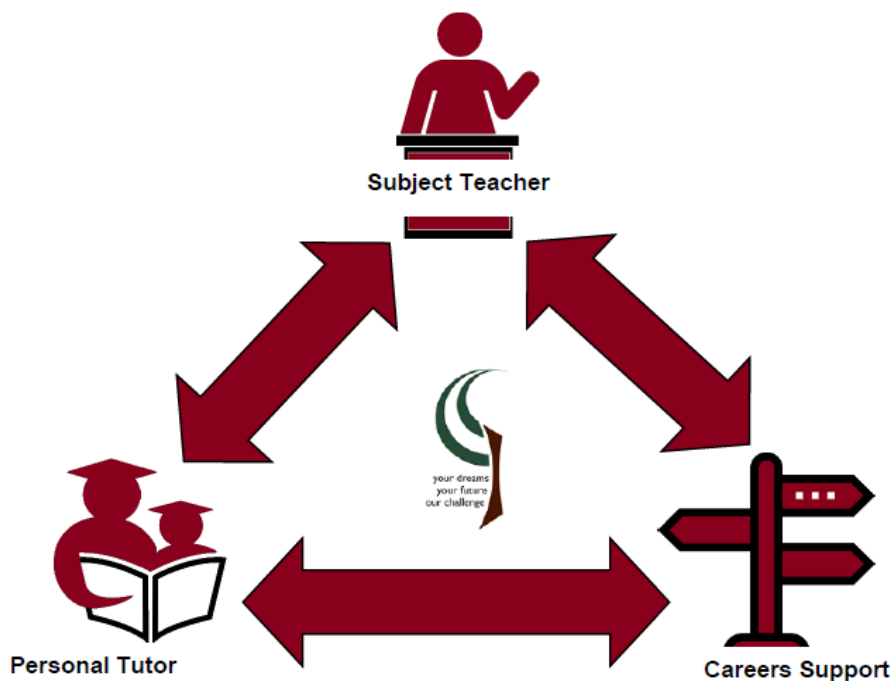
Birchwood is extremely proud of the support offered to the students. This all starts with a Personal Tutor.

The Personal Tutor will be with your child for their two years at Birchwood, they will guide them through induction into the Sixth Form and then help with settling into courses and any changes that need to be made. They will be a point of call for any issues academically, socially or emotionally.

They will support with Work Experience Placement, University, Apprenticeship and Job Applications and will be a central point in their lives for their time at Birchwood. A student this year commented, 'Having a dedicated member of staff for advice and guidance has been so helpful in my next steps'.

Facilities

Birchwood is very fortunate to have wonderful facilities from stunning Art rooms to a modern and well equipped Gym. The teaching spaces are all bright and spacious and have Wi-Fi access throughout. The school is also undertaking a transformation of its IT equipment and from September 2024 you will see a fresh new study area and a well-appointed Library with a Sixth Form focussed area. The Café is also well used for more social study and there are some beautiful places to work outside in the summer term.



Subjects on Offer

Accounting

Qualification Type	Awarding Body	Entry Requirements
A Level	AQA	6 in Maths / 5 in English

Assessment Type

External exams at end of course.

Brief Description of Course

A qualification in accounting will always be helpful – whether it's used professionally or personally. This course helps students to understand the responsibilities of the accountant and the impacts of their recommendations on the business and the wider environment. Students will build knowledge and understanding of key concepts, principles and techniques that they can apply to real-life scenarios, developing the ability to solve problems logically, analyse data methodically, make reasoned choices and communicate effectively.

Destinations eg University, Degrees, Apprenticeships, Careers

A Level Accounting can lead to university courses, apprenticeships and careers relating to finance, accounting/audit/tax or general business/management.

Art & Design (Fine Art)

Qualification Type	Awarding Body	Entry Requirements
A Level	Pearson Edexcel	GCSE Grade 5 in Art & Design, Technology Product design, Textiles or Graphics

Assessment Type

60% Coursework + 40% Exam.

Brief Description of Course

Component 1- Portfolio- Personal Investigation practical work + Personal Study essay related to practical.

Component 2- Externally set assignment exploring a given theme to produce practical work.

Destinations eg University, Degrees, Apprenticeships, Careers

College - Art Foundation

University - Art Degrees

Apprenticeship in design related areas.

Industry in art related career.

Art & Design (Textile design)

Qualification Type	Awarding Body	Entry Requirements
A Level	Pearson Edexcel	GCSE Grade 5 in Art & Design, or Technology Product Design, Textiles or Graphics

Assessment Type

60% Coursework- Portfolio + 40% Exam.

Brief Description of Course

Component 1-

Portfolio- Personal Investigation practical work + Personal Study essay related to practical.

Component 2-

Externally set assignment exploring a given theme to produce practical work.

Destinations eg University, Degrees, Apprenticeships, Careers

College - Art Foundation.

University - Art degrees.

Apprenticeship in design fields.

Careers in the arts or design field.

Biology

Qualification Type	Awarding Body	Entry Requirements
A Level	AQA	Grade 6 in Triple Biology Grade 6/6 in Combined Science Trilogy

Assessment Type

Examination.

Brief Description of Course

By studying Biology at A Level students will learn to understand the living world, to sense the wonder of evolution, to catch the excitement of genetic engineering, to think independently, to challenge widely-held beliefs, to appreciate the delicate ecological balance that sustains life on Earth, and to answer fundamental questions like "what is life?" If students enjoyed Biology at GCSE, and would like to delve into it in more depth, then A Level Biology is the course for them.

Destinations eg University, Degrees, Apprenticeships, Careers

These skills enable students to enter a wide range of courses in different fields. Biology students often go on to study courses such as: Medicine, Dentistry, Veterinary Science, Radiography, Nursing, Chiropody, Psychology, Forensic Science, Archaeology, Marine Biology, Biological Science, Ecology, Sports Studies, Biochemistry, Zoology and even Teacher training!

Business

Qualification Type	Awarding Body	Entry Requirements
A Level	Edexcel	5 in Maths and 5 in English

Assessment Type

External exams at end of course.

Brief Description of Course

With a focus on helping you to become a good decision maker, you'll learn essential managerial skills, alongside techniques to help you become an analytical problem solver in each of the main business functions - marketing, operations, human resources and finance. These skills are all highly sought after and valued in a wide range of careers.

Destinations eg University, Degrees, Apprenticeships, Careers

If you'd like to study business, finance or management at university, A Level Business provides an excellent foundation. The skills you learn are transferable across a broad range of subjects and careers. Whatever you choose to do in the future, you'll find that the things you learn in this course will help.

Business

Qualification Type	Awarding Body	Entry Requirements
BTEC Extended Certificate	Edexcel	TPS: 34

Assessment Type

4 units include 2 exams and 2 coursework units.

Brief Description of Course

The BTEC Extended Certificate in Business gives students an insight into the business world. This includes, business aims and objectives, the reasons for business success and internal and external influences. This course also provides an understanding of Finance, Marketing and Human Resources concepts.

Destinations eg University, Degrees, Apprenticeships, Careers

Students completing the BTEC Extended Certificate in Business typically go on to studying university courses in business areas such as Marketing, Finance, Administration or Management.

Business

Qualification Type	Awarding Body	Entry Requirements
BTEC Level 3 Diploma	Edexcel	TPS: 34

Assessment Type

8 units: Includes 3 exam units and 5 coursework units.

Brief Description of Course

The BTEC Diploma in Business gives students an insight into the business world. This includes, business aims and objectives, the reasons for business success and internal and external influences. This course also provides an understanding of marketing, human resources and international business concepts.

Destinations eg University, Degrees, Apprenticeships, Careers

Students completing the BTEC Diploma in Business typically go on to studying university courses in business areas such as Marketing, Human Resources, Finance, Administration or Management.

Chemistry

Qualification Type	Awarding Body	Entry Requirements
A Level	AQA	6 in Triple Chemistry 6/6 in Combined Science Trilogy

Assessment Type

Examination.

Brief Description of Course

This course will try to give students the skills and understanding to determine the way Chemistry affects their everyday life by applying concepts into contemporary areas of Chemistry including: climate change, green Chemistry, Pharmaceuticals and Chemistry research.

Development of practical skills
Physical Chemistry
Inorganic Chemistry

Foundations in Chemistry
Organic Chemistry

Destinations eg University, Degrees, Apprenticeships, Careers

Whilst many job opportunities specifically using Chemistry require higher qualifications, most laboratory based jobs benefit from a Chemistry qualification, for instance Dental Assistant or Veterinary Assistant. Many employers view success at GCE Chemistry as a clear indication of sound academic ability.

In addition a number of other courses either specifically require or find it desirable to have a GCE in Chemistry. These include courses such as Chemical Engineering, Medicine, Veterinary Medicine, Biological Sciences, Environmental Science, Pharmacy and Dentistry.

Computer Science

Qualification Type	Awarding Body	Entry Requirements
A level	OCR	Grade 6 in Computer Science or 6 in Maths

Assessment Type

The A Level in Computer Science is a linear qualification with 100% external assessment. This qualification consists of two examined components (01 and 02), externally assessed by OCR and one internally assessed and moderated non exam assessment component (Programming project). Both examinations are of 2 hours and 30 minutes duration, each with a 40% weighting. The non-exam assessment component weighted at 20%.

Brief Description of Course

Computer Science is a practical subject where you can apply the academic principles learned in the classroom to real-world systems. It is an intensely creative subject that combines invention and excitement, and can look at the natural world through a digital prism. The A Level in Computer Science will value computational thinking, helping learners to develop the skills to solve problems, design systems and understand the power and limits of human and machine intelligence.

Destinations eg University, Degrees, Apprenticeships, Careers

This course will enable learners to progress to higher education or to progress directly to employment. This qualification is suitable for students intending to pursue any career in which an understanding of technology is needed. It will provide students with a range of transferable skills which will facilitate personal growth and foster cross curriculum links in areas such as maths, science and design and technology.

Maths Core (Maths in context)

Qualification Type	Awarding Body	Entry Requirements
Level 3 (1/2 A Level)	Edexcel	Grade 4 in GCSE mathematics

Assessment Type

2 exam papers (1 hour 40 each).

Brief Description of Course

Core maths is a qualification designed to support students who are studying A Level subjects with a high mathematical demand. It involves studying real life functional problems which require students to comprehend, interpret and analyse the content of real world problems which develop their mathematical skills from GCSE.

Destinations eg University, Degrees, Apprenticeships, Careers

This course will support studying subjects in further education which involve a mathematical element, including Economics, Finance, Geography, Sociology, Biology and more.

D&T: Product Design

Qualification Type	Awarding Body	Entry Requirements
A Level	AQA	5 in D&T or 5 in Art & Science

Assessment Type

Exam and Coursework 50/50.

Brief Description of Course

Students will develop theoretical knowledge ranging from materials through to factors that influence design. Much of the theory is taught through practical tasks to develop student's skills to allow them to design and make a prototype product for their final NEA. This is a creative qualification that gives students the practical skills, theoretical knowledge and confidence to succeed in a number of careers. Especially those in the creative industries.

Destinations eg University, Degrees, Apprenticeships, Careers

University courses in a range of creative fields from Product Design through to Architecture and Engineering.

D&T: Fashion & Textiles

Qualification Type	Awarding Body	Entry Requirements
A Level	AQA	5 in D&T or 5 in Art

Assessment Type

Exam and Coursework 50/50

Brief Description of Course

Students will develop technical and design understanding of a wide range of materials and processes to develop the skills to be an effective Fashion designer. A range of practical skills will be developed in order to design and produce a prototype product for their NEA.

Destinations eg University, Degrees, Apprenticeships, Careers

University courses in design, especially Music related courses.

Drama & Theatre Studies

Qualification Type	Awarding Body	Entry Requirements
A Level	Pearson Edexcel	GCSE Grade 5 in Drama, English Language Or English Literature. (If GCSE Drama has not been studied a Grade 5 in English Literature or English Language is a requirement)

Assessment Type

Coursework 60% + Exam 40%.

Brief Description of Course

Component 1: Devising

Coursework 40% (80 marks)

Component 2: Text in Performance

Coursework 20% (60 marks)

Component 3: Theatre Makers in Practice

Written examination: 2 hours 30 minutes, 40% (80 marks)

Destinations eg University, Degrees, Apprenticeships, Careers

Higher education in drama and theatre studies, plus a wide range of other fields.

Apprenticeships and careers in the performing arts including actor, presenter, director, stage manager. Drama has so many transferable skills. Fields include marketing, telecommunications, management, teaching, sales, therapy, social work.

Economics

Qualification Type	Awarding Body	Entry Requirements
A Level	Edexcel	5 in Maths, 6 in English or 6 in Maths, 5 in English

Assessment Type

External exams at end of course.

Brief Description of Course

Economics is the right subject for you if you enjoy debating economic issues such as: inequality, immigration and how we should pay for healthcare; using and interpreting data to analyse economic problems; discussing alternative courses of action; and keeping up to date with national and international trends.

Destinations eg University, Degrees, Apprenticeships, Careers

Economics students tend to progress to university courses or apprenticeships in areas such as finance, management, politics and public policy.

Environmental Science

Qualification Type	Awarding Body	Entry Requirements
A Level	AQA	5/5 in combined science 5 in any triple science

Assessment Type

Examination.

Brief Description of Course

Environmental Science is a multi-disciplined subject that will allow you to investigate the cause and effects of 21st century challenges on the natural environment. The course will allow you to develop the skills and knowledge to understand how our environment works and how people are changing it, be it for better or for worse!

Destinations eg University, Degrees, Apprenticeships, Careers

Suitable degrees once you have successfully completed your A Level Environmental Science course include environmental science, ecology, microbiology, law, geography, and conservation to name a few.

Beyond university, potential future careers for A Level Environmental Science students include in-demand careers such as:

Environmental specialists

Landfill engineers

Geologist

Nuclear waste management

Hydrogeologists

English Language

Qualification Type	Awarding Body	Entry Requirements
A Level	AQA	Grade 6 or above in GCSE English Language

Assessment Type

80% final examination - 20% Coursework (NEA).

Brief Description of Course

This A Level is for individuals who wish to explore and understand how language is the prism through which we see the world. Students will study the conventions of written, spoken and multimodal language in order to understand how the building blocks of human communication shape the way that we think. You will learn about the development of the English language, how it has evolved over time and how children learn to speak. You will also explore the central role language plays in the construction of identity. The course offers a logical framework methodology for analysing language in the world around you.

Destinations eg University, Degrees, Apprenticeships, Careers

Linguistics students often go on to deepen their love of language by studying Linguistics and also Creative Writing at university; it also complements those who are interested in Law, History, Psychology and Classics, as well as any Modern Foreign Language.

English Literature

Qualification Type	Awarding Body	Entry Requirements
A Level	AQA	Grade 6 or above in GCSE English Literature

Assessment Type

80% final examination - 20% Coursework (NEA).

Brief Description of Course

Studying English Literature at A Level is a challenging yet exciting and enriching experience for lovers of literature and reading. You will experience a wide range of texts including the classics and Shakespeare, as well as a diverse range of modern literature, drama and poetry. You will develop an understanding of relationships between texts and of the significance of cultural and contextual influences on readers and writers. Building on your skills from GCSE English, you will learn to evaluate the different and conflicting interpretations of a text and become confident about expressing your own independent judgement.

Destinations eg University, Degrees, Apprenticeships, Careers

The skills acquired throughout English Literature A Level are transferable to almost every career path you can imagine. Universities and employers in a wide variety of fields place great value on English students' ability to confidently communicate, analyse and comprehend key ideas as well as to think critically and creatively to construct powerful arguments. From the creative industries (e.g. advertising, publishing, media etc.) and education to the legal sphere and scientific research, your English Literature A Level will provide you with lifelong skills that will make you an asset to any workplace.

Esports

Qualification Type	Awarding Body	Entry Requirements
BTEC Level 3 Extended Certificate	Pearson	TPS 34 points

Assessment Type

Assessment is criterion referenced, based on the achievement of specified learning outcomes. Each unit has specified criteria which are to be used for grading. A summative unit grade can be awarded at pass, merit, distinction or distinction star. The Extended Certificate is equivalent to 1 A Level.

Brief Description of Course

This qualification is intended for post-16 learners wanting to progress to employment in the e-Sports industry and other related industries. There is a large focus on team work, the entrepreneurship in the e-Sports industry, health and well being.

Destinations eg University, Degrees, Apprenticeships, Careers

A career in e-Sports, most likely an apprenticeship.

EPQ (Extended Project Qualification)

Qualification Type	Awarding Body	Entry Requirements
Project	AQA	The EPQ is open to all students who maintain a good attitude to learning and progress in their other subjects.

Assessment Type

The outcome of the project (an essay or an artefact) is assessed alongside the production log and presentation and documents the student's journey through their independent project.

Brief Description of Course

Students choose, research and refine their own project title on a topic that extends their academic studies or areas of personal interest. They carry out and evaluate academic research in order to create either a 500 word essay or an artefact and 1000 word report. They learn the research skills and independent learning habits that will hold them in good stead at university and in their future careers.

Destinations eg University, Degrees, Apprenticeships, Careers

The EPQ provides skills that are highly sought after by universities and employers. Universities can make lower offers to students pursuing a relevant EPQ.

Film Studies

Qualification Type	Awarding Body	Entry Requirements
A Level	Educas	Grade 5 in GCSE Film or Media or Grade 5 in GCSE English Language or Literature

Assessment Type

70% from two external examinations. 30% from non-exam assessment (comprising of a production and a written evaluative analysis).

Brief Description of Course

Many consider film to be the main cultural innovation of the 20th century and a major art form of the last hundred years. Those who study it characteristically bring with them a high degree of enthusiasm and excitement for what is a powerful and culturally significant medium, inspiring a range of responses from the emotional to the reflective. Film Studies consequently makes an important contribution to the curriculum, offering the opportunity to investigate how film works both as a powerful medium of representation and as an aesthetic medium.

Destinations eg University, Degrees, Apprenticeships, Careers

This course is appropriate for students wanting to study film at higher academic levels, and can provide a useful "taster" for those considering more specialised vocational courses.

French

Qualification Type	Awarding Body	Entry Requirements
A Level	Edexcel	Grade 6 in French (+ grade 6 in English Literature / Language)

Assessment Type

100% exam.

Brief Description of Course

A qualification designed to delve deeper into the roots of French culture and society across the French-speaking world which enables students to develop a wide range of applicable skills to negotiate the world beyond, in a variety of sectors. Students become passionate, independent learners on their path to fluency. This course provides them with a global perspective, an enhanced skill set and the opportunity to explore more specific areas of the culture of their own choice. They will also study a film and a play to further polish their expertise as well as having multiple opportunities to attend extra-curricular events.

Destinations eg University, Degrees, Apprenticeships, Careers

University degrees which include the opportunity to spend a year abroad, Apprenticeships, opportunities to work abroad in a vast number of industries including Journalism, Finance, Business, Travel, Law. French combines well with a wide range of other subjects in addition.

Further Maths

Qualification Type	Awarding Body	Entry Requirements
A Level	Edexcel	Grade 8 in GCSE Mathematics

Assessment Type

Exams.

Brief Description of Course

Further mathematics is a subject for those who have an aptitude in Maths at advanced level. Those who intend to study Mathematics at university would find it particularly useful. The course has a variety of options to explore areas of Mathematics in more depth including Complex Numbers and Calculus.

Destinations eg University, Degrees, Apprenticeships, Careers

Successful completion of the course allows progression onto further study in a range of courses including Physics, Economics, Geography, Mathematics, Engineering and more.

Geography

Qualification Type	Awarding Body	Entry Requirements
A Level	OCR	6 in GCSE Geography (or another Humanities subject if you didn't take geography at GCSE)

Assessment Type

80% exams, 20% coursework.

Brief Description of Course

The A Level geography course contains an even balance of human and physical geography topics. Some topics (e.g. Climate Change) build on what was studied at GCSE, but the course contains a great variety of new topics too (e.g. Human Rights, Global Migration). The topics are all contemporary, meaning they can frequently be found in the news, and are really important to today's society. There is a 20% coursework element where you choose the topic you would like to focus on and design a project based on fieldwork.

Destinations eg University, Degrees, Apprenticeships, Careers

Geography is one of the key facilitating subjects which means it has a lot of transferable skills which can lead to a wide range of careers. These include:

• Sustainability and green issues	• Law
• Urban regeneration	• Accounting
• Retail location	• Banking
• Researching and creating geographical documentaries	• Civil Service
• Managing the effects of hazards and climate change	



German

Qualification Type	Awarding Body	Entry Requirements
A Level	Edexcel	Grade 6 in German (+ grade 6 in English Literature / Language)

Assessment Type

100% exam.

Brief Description of Course

A qualification designed to delve deeper into the roots of German culture and society across German speaking countries which enables students to develop a wide range of applicable skills to negotiate the world beyond, in a variety of sectors. Students become passionate, independent learners on their path to fluency. This course provides them with a global perspective, an enhanced skill set and the opportunity to explore more specific areas of the culture of their own choice. They will also study a film and a novel to further polish their expertise as well as having multiple opportunities to attend extra-curricular events.

Destinations eg University, Degrees, Apprenticeships, Careers

University degrees which include the opportunity to spend a year abroad, Apprenticeships, opportunities to work abroad in a vast number of industries including journalism, Finance, Business, Travel, Law. German combines well with a wide range of other subjects in addition.

History

Qualification Type	Awarding Body	Entry Requirements
A Level	OCR	GCSE grade 5 in English and History (if studied)

Assessment Type

External examination and coursework.

Brief Description of Course

History is an exciting A Level that allows you to develop your interest and enthusiasm for history. It will enable you to acquire an understanding of different identities within society and an appreciation of aspects such as social, cultural, religious and ethnic diversity. You will develop the ability to ask relevant and significant questions about the past and to research them, while making links and comparisons across different periods.

The three areas of study, in addition to the independent coursework essay, are:

- England 1547–1603: the Later Tudors.
- The USA in the 19th Century: Westward expansion and Civil War 1803–c.1890
- Popular Culture and the Witchcraze of the 16th and 17th Centuries

Destinations eg University, Degrees, Apprenticeships, Careers

Students completing an A Level in History typically go on to study History at university, with some choosing to study Archeology. Previous students have also pursued chosen careers in teaching, law, journalism, conservation, broadcasting, and curating.

IT

Qualification Type	Awarding Body	Entry Requirements
BTEC Extended Cert.	Pearson Edexcel	TPS 34

Assessment Type

Assessment is criterion referenced, based on the achievement of specified learning outcomes. Each unit has specified criteria which are to be used for grading. A summative unit grade can be awarded at pass, merit, distinction or distinction star. The Extended Certificate is equivalent to 1 A Level.

Brief Description of Course

The course is designed to give students the technical knowledge, skills and understanding they need to use computer systems competently and to equip students with some of the skills they will need in the workplace or in further education or training. It will promote teaching and learning through work related contexts, provide a range of teaching, learning and assessment styles to motivate students to achieve their full potential. The course consists of 3 mandatory units, plus a selection of one additional optional units to be completed over two years.

Destinations eg University, Degrees, Apprenticeships, Careers

The BTEC has been developed in the Information Technology industry and is appropriate for career qualifications in this very wide employment area. It gives students the opportunity to gain a nationally recognised vocational specific qualification to enter employment in the Information Technology industry or to progress to higher education vocational qualifications such as the Edexcel Levels 4 - 7 BTEC Higher National in Information Technology or Computing.

Maths

Qualification Type	Awarding Body	Entry Requirements
A Level	Edexcel	Grade 6

Assessment Type

Exam x3.

Brief Description of Course

Builds on GCSE knowledge of Indices and Surds, Algebraic Proof, Quadratic Equations and more. Then introduces new topics including the Binomial expansion, Differentiation, Integration and Logarithms.

Destinations eg University, Degrees, Apprenticeships, Careers

Successful completion of the course allows progression onto further study in a range of courses including Physics, Economics, Geography, Mathematics, Engineering and more.

Media Studies

Qualification Type	Awarding Body	Entry Requirements
A Level	EDUQAS	Grade 5 in GCSE Media Or Film. If not taken at GCSE, Grade 5 in GCSE English Language or English Literature

Assessment Type

70% from two external examinations. 30% from non-exam assessment (comprising of a production and a written evaluative analysis).

Brief Description of Course

If students see themselves working in film, television, music, publishing or advertising then our course offers them a wealth of practical and theoretical knowledge needed to get ahead. The course provides an opportunity for those with an interest in the media to explore, develop and test their creativity within a qualification structure which is stimulating and demanding and provides a supportive transition from general to more specialised study.

Destinations eg University, Degrees, Apprenticeships, Careers

This course is appropriate for students who would like to progress onto further study or work placements which could lead to a career in the Media Industry, such as Web Design, Journalism or one of the many roles in the TV and Film industry.

Music

Qualification Type	Awarding Body	Entry Requirements
A Level	OCR	GCSE Grade 5 in Music or Grade 5 in an instrument / voice if GCSE music has not been studied.

Assessment Type

Coursework including performing and composing 60% + Externally set listening exam 40%.

Brief Description of Course

- Coursework - 60%
- Choice of two specialisms:
 - Performing including a Recital and written explanation.
 - Composing and technical exercises.
- Exam - 40%.
- Listening and Appraising exam.

Destinations eg University, Degrees, Apprenticeships, Careers

Further study in Music or Performing Arts in Higher education at degree or HND level. This may lead to a career in the music industry.

Musical Theatre

Qualification Type	Awarding Body	Entry Requirements
BTEC Extended Diploma	Pearson Edexcel	GCSE Grade 5 in Dance Or equivalent performance experience at an external dance school

Assessment Type

Range of assessment styles including internally assessed assignments and externally assessed tasks.

Brief Description of Course

Unit 1 - Investigating practitioners work, research and analysis on two practitioners and a theme.

Unit 2 - Developing skills and techniques for live performance.

Unit 3 - Group performance work

Unit 4 - Musical theatre techniques.

Destinations eg University, Degrees, Apprenticeships, Careers

University degree in performing arts.

Teaching qualification, events management, performance, choreography, Dance therapy, dance journalism, Dance – costume / lighting, notation, Dance fundraising/marketing.

Students may also go on to study at dance conservatoires where they study courses in a range of dance styles.

Performing Arts - Dance

Qualification Type	Awarding Body	Entry Requirements
BTEC Extended Certificate	Pearson Edexcel	GCSE Grade 5 in Dance Or equivalent performance experience at an external dance school

Assessment Type

Range of assessment styles including internally assessed assignments and externally assessed tasks.

Brief Description of Course

Unit 1 - Investigating practitioners work, research and analysis on two practitioners and a theme.

Unit 2 - Developing skills and techniques for live performance.

Unit 3 - Group performance work

Unit 4 - Optional unit, select their own style of dance to major in.

Destinations eg University, Degrees, Apprenticeships, Careers

University degree in performing arts. Teaching qualification, events management, performance, choreography, Dance therapy, dance journalism. Dance – costume / lighting, notation. Dance fundraising/marketing.

Students may also go on to study at dance conservatoires where they study courses in a range of dance styles.

Performing Arts - Dance

Qualification Type	Awarding Body	Entry Requirements
BTEC Diploma	Pearson Edexcel	GCSE Grade 5 in Dance Or equivalent performance experience at an external dance school

Assessment Type

Range of assessment styles including internally assessed assignments and externally assessed tasks.

Brief Description of Course

Unit 1 - Investigating practitioners work, research and analysis on two practitioners and a theme.

Unit 2 - Developing skills and techniques for live performance.

Unit 3 - Group performance work.

Unit 4 - Optional unit, select their own style of dance to major in.

Unit 5 - Individual Performance Commission.

Unit 6 - Final live performance to an audience.

Destinations eg University, Degrees, Apprenticeships, Careers

University degree in performing arts.

Teaching qualification, events management, performance, choreography

Dance therapy, dance journalism

Dance – costume / lighting, notation

Dance fundraising/marketing

Students may also go on to study at dance conservatoires where they study courses in a range of dance styles.



Physics

Qualification Type	Awarding Body	Entry Requirements
A Level	AQA	6 in Triple Physics 6/6 in Combined Science Trilogy 6 in Mathematics

Assessment Type

Examination.

Brief Description of Course

This course will give students the skills and understanding to determine the way Physics affects everyday life by applying concepts into real life situations such as: car crashes, temperature probes and timekeeping. Students will cover topics which range from quantum physics all the way up to astrophysics.

Destinations eg University, Degrees, Apprenticeships, Careers

UK Higher Education institutions currently offer many courses where Physics is the primary subject. Often these courses can include an additional year's study, either in industry or at a university abroad. Some courses can include study in other related areas.

Examples include:

Physics with Astrophysics

Physics with Biophysics

Physics with Audio and Optical Physics

Medical Physics

Astronomy

In addition, a large number of other courses either specifically require or find it desirable to have an A Level in Physics. These include courses that cover all fields of Engineering, Mathematics and Architecture.

Physical Education

Qualification Type	Awarding Body	Entry Requirements
A Level	OCR	Grade 5 in GCSE (or Grade 6 in Biology)

Assessment Type

3 x written exams (1x2hr and 2x1hr).

Brief Description of Course

3 sections including:

- i) applied anatomy and physiology, exercise physiology and biomechanics
- ii) skill acquisition and sport psychology
- iii) socio-cultural issues, sport and society and contemporary issues

Destinations eg University, Degrees, Apprenticeships, Careers

University courses - e.g. sport science, physiotherapy, sports coaching

Psychology

Qualification Type	Awarding Body	Entry Requirements
A Level	AQA	6 in English and 5 in Maths OR 5 in English and 6 in Maths

Assessment Type

External exams at the end of the course.

Brief Description of Course

Psychology is an engaging subject in which students will explore different approaches to explaining human behaviour and the research methods that underlie psychological research. Topics include memory, forensic psychology, gender and schizophrenia.

Destinations eg University, Degrees, Apprenticeships, Careers

Students typically follow this course with further study at degree level in order to access careers in counselling, sports psychology, teaching, research, marketing, criminology. Apprenticeships are also available leading to careers in many of these fields.

Politics

Qualification Type	Awarding Body	Entry Requirements
A Level	Edexcel	5 in English

Assessment Type

External exams at end of course.

Brief Description of Course

Politics is a fantastic A Level that shows just how great an influence politics has on us and breaks the illusion that we are disconnected from it. It helps you to know your rights and clarifies what you yourself believe in. Our focus on both UK Politics and the Global Politics option mean that it is excellent preparation for life as an engaged and active citizen of the UK and the wider international community.

Destinations eg University, Degrees, Apprenticeships, Careers

Students completing an A Level in Politics typically go on to study university courses in International Relations or Political Studies. Former students have also go on to pursue careers as journalists, civil servants, business leaders and politicians.

Religious Studies

Qualification Type	Awarding Body	Entry Requirements
A Level	Eduqas	6 in RS, another Humanities subject or English language

Assessment Type

3 exams at the end of Year 13.

Brief Description of Course

The A Level religious studies course covers Christianity, philosophy and ethics in equal proportions. It asks students to think deeply about important questions and construct essays which show their skills of explanation, analysis and evaluation. There are links with subjects like sociology, psychology politics and history but many students also choose religious studies as it's different to other courses they are taking.

Destinations eg University, Degrees, Apprenticeships, Careers

Higher education or careers e.g. working in the charity sector, teaching, government, arts etc

Sociology

Qualification Type	Awarding Body	Entry Requirements
A Level	AQA	5 in English

Assessment Type

External exams at the end of the course.

Brief Description of Course

Sociology is a dynamic subject that invites you to explore and question the world around you through a new lens. From dissecting pressing social issues, to understanding the role and structure of the criminal justice system, Sociology equips you with critical thinking skills that extend far beyond the classroom. It is a subject that fosters empathy, broadens perspectives, and assists you in becoming an informed and socially conscious individual, ready to make a positive impact on society.

Destinations eg University, Degrees, Apprenticeships, Careers

Sociology can be used as an excellent springboard for further education and advanced degrees in various disciplines. Students completing an A Level in Sociology often go onto university courses in Anthropology, Sociology, Criminology and Social Policy. Students previously have also chosen to follow their interest in the criminal justice system through studying Law. It can help students to pursue careers as police officers, social workers, teachers, journalists, policy officers and many more.

Spanish

Qualification Type	Awarding Body	Entry Requirements
A Level	Edexcel	Grade 6 in Spanish (+ grade 6 in English Literature / Language)

Assessment Type

100% exam.

Brief Description of Course

A qualification designed to delve deeper into the roots of Spanish culture and society across the Spanish-speaking world which enables students to develop a wide range of applicable skills to negotiate the world beyond, in a variety of sectors. Students become passionate, independent learners on their path to fluency. This course provides them with a global perspective, an enhanced skill set and the opportunity to explore more specific areas of the culture of their own choice. They will also study a film and a play to further polish their expertise as well as having multiple opportunities to attend extra-curricular events.

Destinations eg University, Degrees, Apprenticeships, Careers

University degrees which include the opportunity to spend a year abroad, Apprenticeships, opportunities to work abroad in a vast number of industries including journalism, Finance, Business, Travel, Law. Spanish combines well with a wide range of other subjects in addition.

Sport Studies

Qualification Type	Awarding Body	Entry Requirements
BTEC National Diploma / Extended Diploma in Sport	Pearson / Edexcel	TPS 34

Assessment Type

Combined internal (coursework) and external (exams and controlled assessments) moderation.

Brief Description of Course

9 Units (Diploma), 14 Units (Extended Diploma) including sports injuries, fitness testing, sports nutrition, analysis of performance and outdoor and adventurous activities.

Destinations eg University, Degrees, Apprenticeships, Careers

University, degrees - sports science, physiotherapy, sports coaching.



Birchwood High School

Address Parsonage Lane, Bishop's Stortford, Herts CM23 5BD

Tel 01279 655936

Email admin@birchwood.herts.sch.uk

Website www.birchwoodonline.co.uk

Principal Mr Sam Griffin